

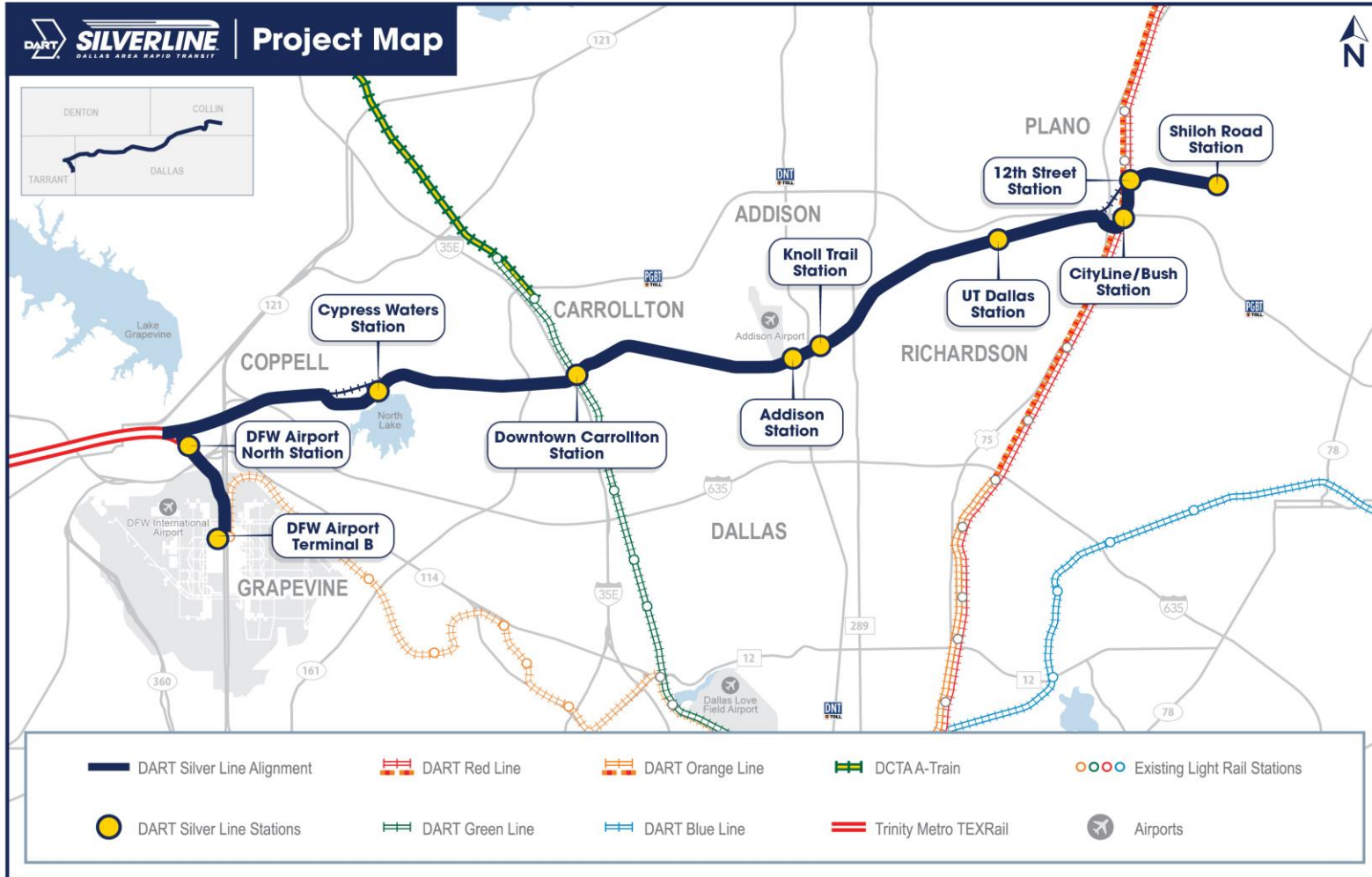
# Dallas Area Rapid Transit (DART) Silver Line Project Update

UTD Student Government  
Tuesday, September 30, 2025



# 26-MILE ALIGNMENT SERVING 7 CITIES

ADDISON • CARROLLTON • COPPELL • DALLAS • GRAPEVINE • PLANO • RICHARDSON



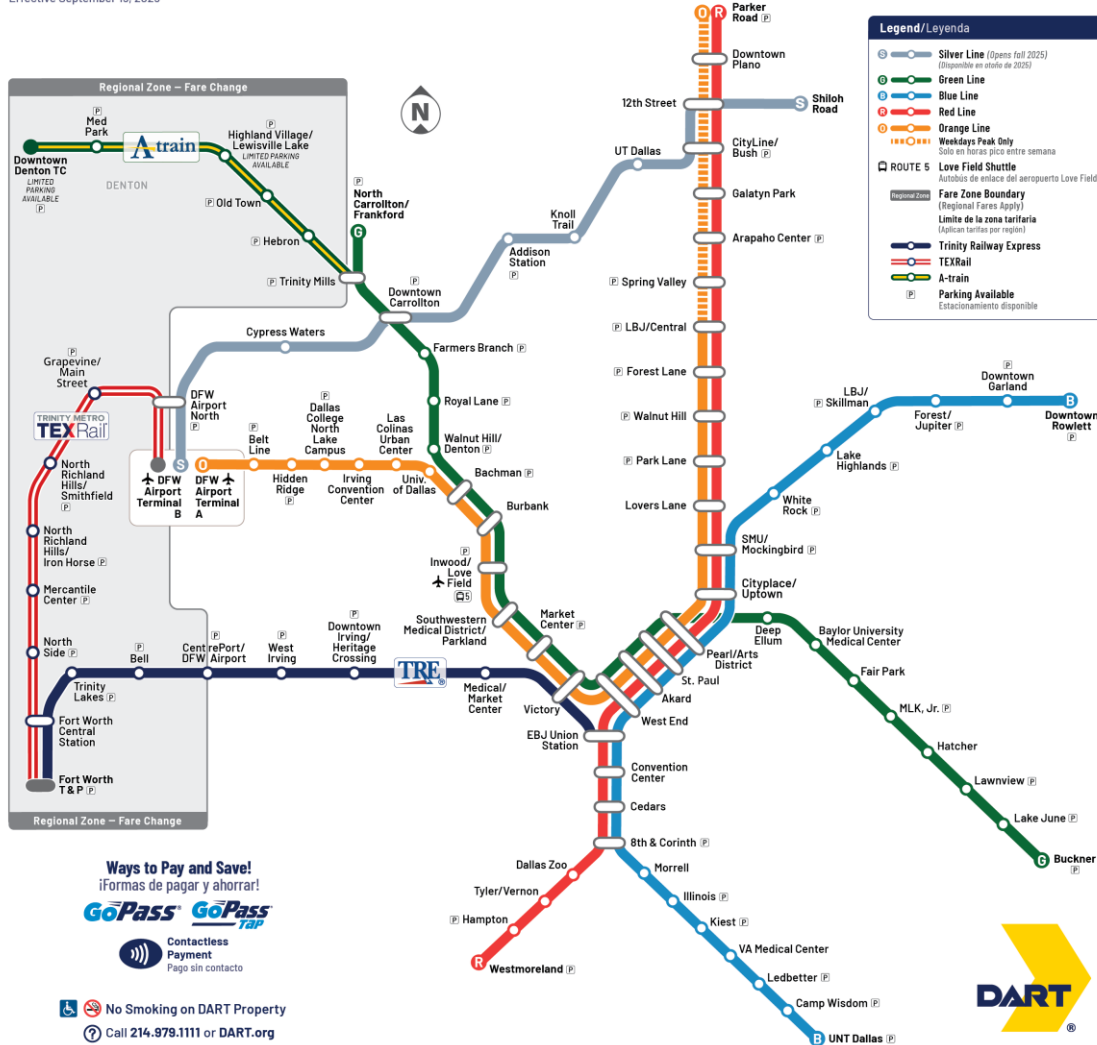
**10**  
Rail Stations

**4** Rail Connections

- Green LRT
- Orange LRT
- Red LRT
- TEXRail Commuter Rail

# Rail System Map / Mapa del sistema ferroviario

Effective September 15, 2025



**Ways to Pay and Save!**  
 ¡Formas de pagar y ahorrar!

**GoPass GoPass Tap**

Contactless Payment  
 Pago sin contacto

No Smoking on DART Property

Call 214.979.1111 or DART.org



# Silver Line Community Benefits



## Access



Silver Line service provides **access to new possibilities**, expanding service from DFW Airport to Plano and six cities in between.



## Mobility

Supports regional transportation goals by **addressing mobility and system sustainability**, including connections to a hike and bike trail system connecting each city.



## Growth Opportunities

Supports **continued growth opportunities** throughout the area and for individuals by expanding access to education and jobs as well as business development and access to green space.



## Economic Catalyst

Serves as an **economic catalyst** for the area with over 200,000 jobs and educational opportunities within a ½ mile of the corridor.



## Reliability

Provides **regional connectivity, travel efficiency and transit reliability** through seamless, safe and quality service in state-of-the-art vehicles.



## Safety & Security

Serves as a launch point for **fantastic spaces and safe community hubs** through transit-oriented-development (TOD), station designs and art.



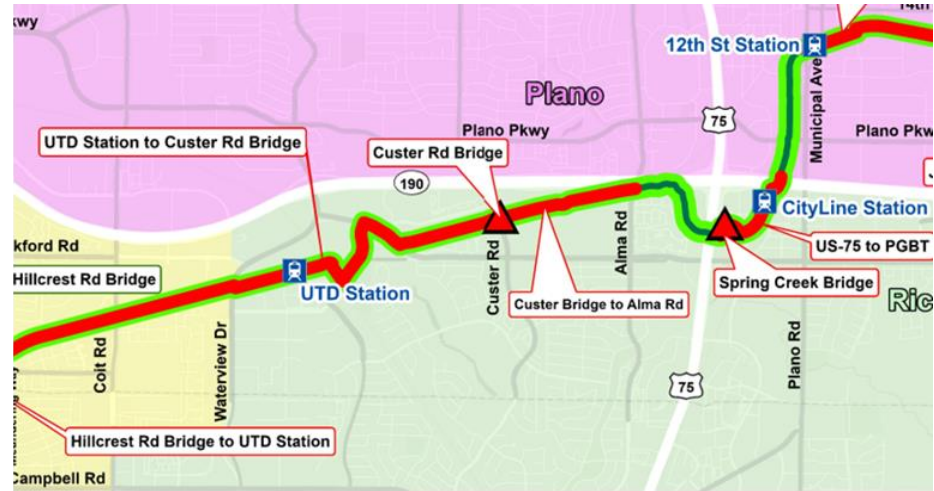
# Cotton Belt Regional Trail Corridor



Construction is being done in phases with some portions (Phases 1 & 2) constructed along with the Silver Line Regional Rail Project. Phase 3 of trail is to be constructed later with approval by NCTCOG and each partner city.

# Cotton Belt Regional Trail Corridor - Richardson

- Total trail package in Richardson for Phase 2 is 2.8 miles of trail with two pedestrian bridges.



Area	Start Date	End Date
All Richardson Trail	June 2025	January 2027
Spring Creek Bridge	October 2025	January 2027
Custer Bridge	September 2025	January 2027

# Silver Line Station Progress

Status as of September 2025

- **DFW Airport North (Grapevine)** – 98% Complete
- **Cypress Waters (Dallas/Coppell)** – 98% Complete
- **Downtown Carrollton** – 96% Complete
- **Addison** – 98% Complete
- **Knoll Trail (Dallas)** – 98% Complete
- **UT Dallas (Richardson)** – 98% Complete
- **CityLine/Bush (Richardson)** - 98% Complete
- **12th Street LRT Aerial (Plano)** – 95% Complete
- **12th Street At-Grade (Plano)** – 98% Complete
- **Shiloh Road (Plano)** – 98% Complete



# North Dallas



Coit Road

# Richardson



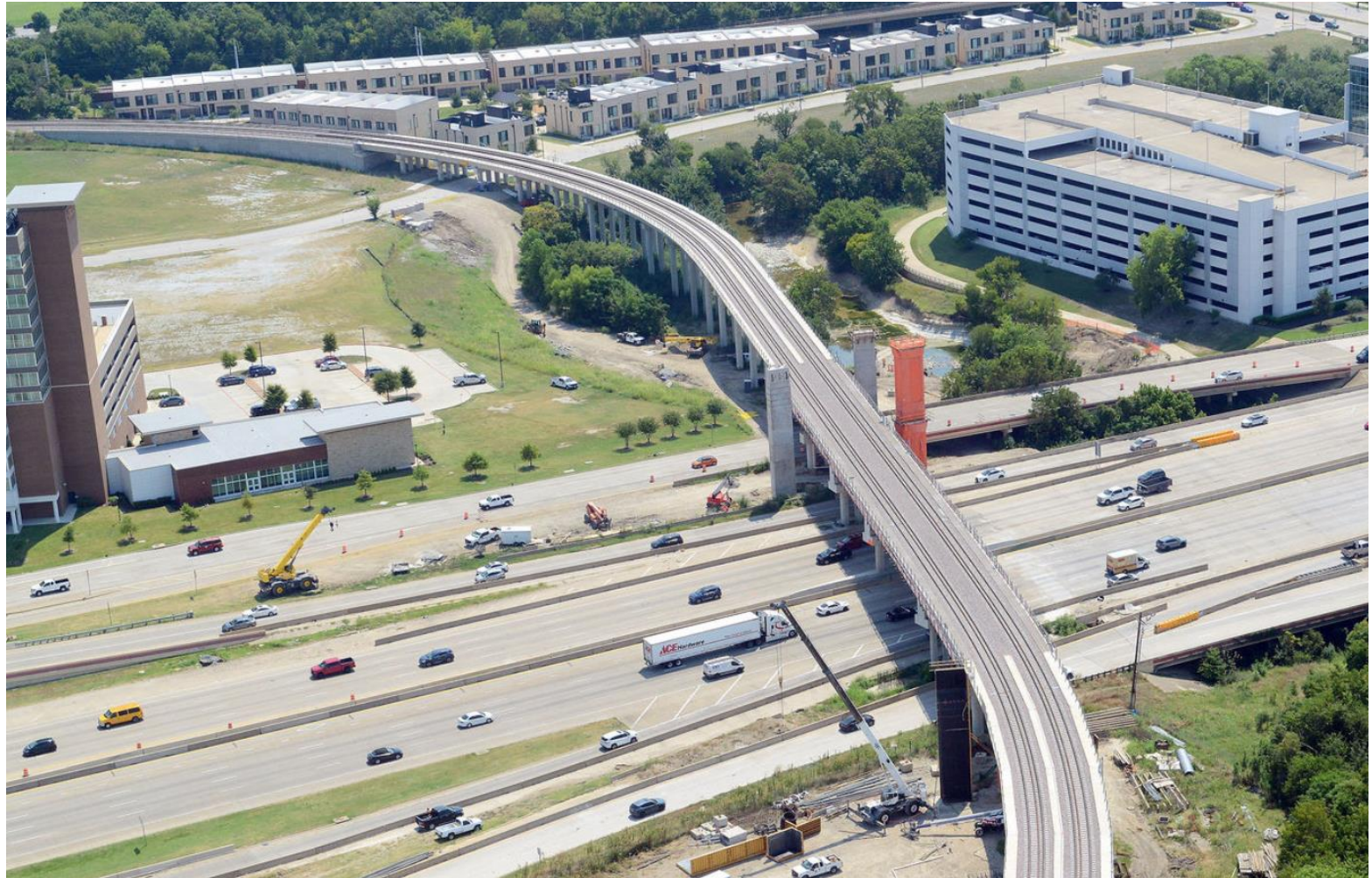
## UT Dallas Station Area

# Richardson



**UT Dallas Station**

# Richardson



**US-75 Rail Bridge**

# Richardson



**City Line/Bush Station Area**

# Richardson



**City Line/Bush Station**

# Richardson



**Silver Line Train on Tracks**

# Plano



**Plano Parkway Pedestrian Bridge**

# Silver Line Station Parking

The focus has been on advancing the Silver Line project, so there is no current long-term paid parking plan in place. Riders are welcome to park at Silver Line stations for free and retain responsibility for any overnight parking until DART provides notification of a long-term parking solution. Approximate parking available by station and travel time to DFW Airport Terminal B includes:

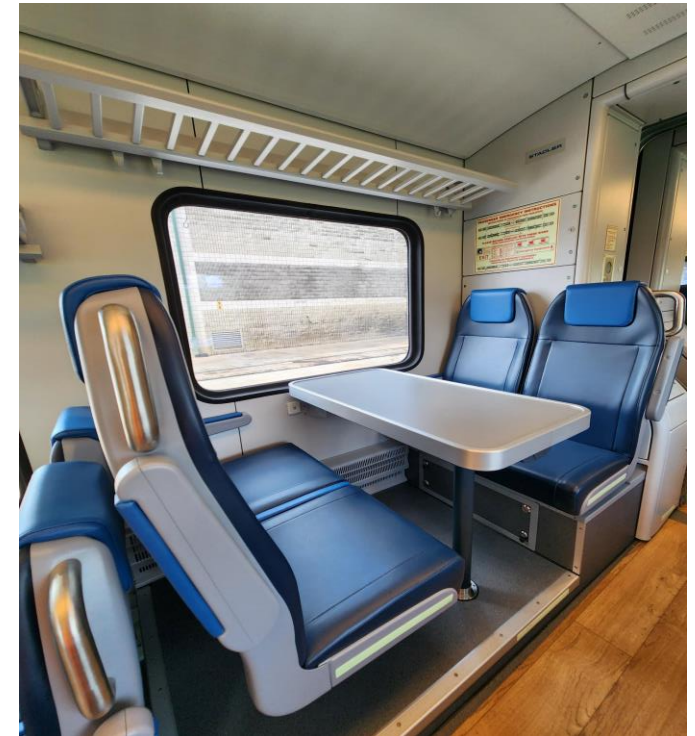
- **DFW Airport North (Grapevine)** – 300 spaces/4 minutes
- **Cypress Waters (Dallas/Coppell)** – 190 spaces/15 minutes
- **Downtown Carrollton** – 400 spaces/24 minutes
- **Addison** – 250 spaces/32 minutes
- **Knoll Trail (Dallas)** – no parking available/35 minutes
- **UT Dallas (Richardson)** – 200 spaces/44 minutes
- **CityLine/Bush (Richardson)** - 1,100 spaces/51 minutes
- **12th Street (Plano)** – 250 spaces/56 minutes
- **Shiloh Road (Plano)** – 600 spaces/ 60 minutes



# Silver Line Vehicles

Silver Line's state-of-the-art vehicles require low maintenance, are diesel powered and meet strict EPA standards. The vehicles will feature:

- seating for 220+ passengers
- overhead storage, bike hooks, large luggage compartment (**no restrooms**)
- internal and external closed-circuit television (CCTV) for consistent DART Police monitoring



# Silver Line Testing Details

End-to-end testing of vehicles is underway and includes:

- Simulated service with stops from station to station.
- No passenger pick-up or drop-off.
- Testing of systems and crossings on track – flaggers when necessary.
- Active Quiet Zones.
- Test runs will begin to mimic passenger revenue service closer to opening day.





# Silver Line Opening Operating Plan

Includes daily service from DFW Airport Terminal B to Shiloh Road Station (Plano):

- First train leaves DFW Airport at approximately 4:30 a.m.
- Last train leaves DFW Airport at approximately 12:30 a.m.
- Trains run every 30 minutes in both directions during **peak weekday service** - *approximately 5:30 to 9:30 a.m. 2:30 to 7:30 p.m.*
- Trains every 60-minutes during all other weekday service times and on weekends
- Weekend trains will run from DFW Airport to Shiloh Road Station from approximately 5:30 a.m. to 12:30 a.m.
- Ability to adjust train schedule for special event service in agreement with city staff

# Staying Informed



Visit [www.DART.org/SilverLine](http://www.DART.org/SilverLine)



Email [SilverLine@DART.org](mailto:SilverLine@DART.org)



Attend meetings regularly



Sign up for project alerts at [www.DART.org/SilverLine](http://www.DART.org/SilverLine)



DART Hotline 972-833-2856 (construction only)



# Thank You For Joining Us Today

This Presentation Has Concluded

